



Beaufort County Public Works
Stormwater Infrastructure
Project Summary

Project Summary: Bluffton Parkway

Activity: Routine/Preventive Maintenance

Duration: 10/11/17-10/12/17

Narrative Description of Project:

Repaired sinkhole.

2018-539 / Bluffton Parkway	Labor Hours	Labor Cost	Equipment Cost	Material Cost	Contractor Cost	Indirect Labor	Total Cost
AUDIT / Audit Project	0.5	\$10.90	\$0.00	\$0.00	\$0.00	\$0.00	\$10.90
CBREP / Catch basin - repaired	20.0	\$429.80	\$55.63	\$76.29	\$0.00	\$260.55	\$822.27
HAUL / Hauling	10.0	\$217.90	\$94.20	\$77.26	\$0.00	\$0.00	\$389.36
SD / Soft Digging	33.0	\$741.79	\$71.92	\$73.82	\$0.00	\$386.32	\$1,273.85
2018-539 / Bluffton Parkway Sub Total	63.5	\$1,400.39	\$221.75	\$227.37	\$0.00	\$646.87	\$2,496.37
Grand Total	63.5	\$1,400.39	\$221.75	\$227.37	\$0.00	\$646.87	\$2,496.37

Before

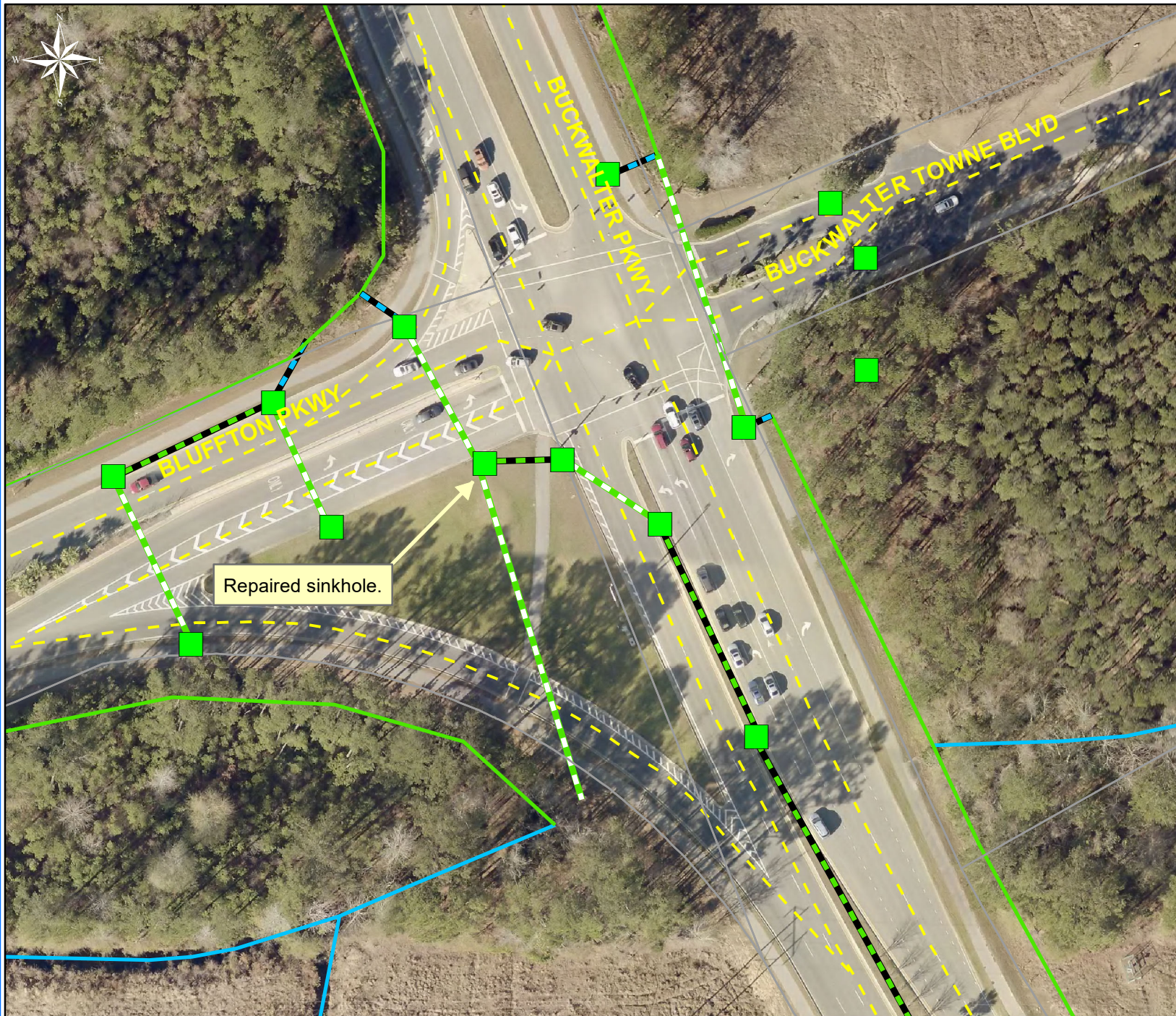


During



After

(Picture Not Available)



Project: Bluffton Parkway

Activity: Routine/ Preventive Maintenance

Project #: 2018-539

Township/SW Dist: Bluffton/4

Completed: October 2017

Legend

Drainage Type

- Access Pipe
- Bleeder Pipe
- Channel Pipe
- Channel
- Stream
- Crossline Pipe
- Driveway Pipe
- Lateral
- Lateral Pipe
- River
- Road Pipe
- Roadside
- Roadside Pipe



1 inch = 83 feet